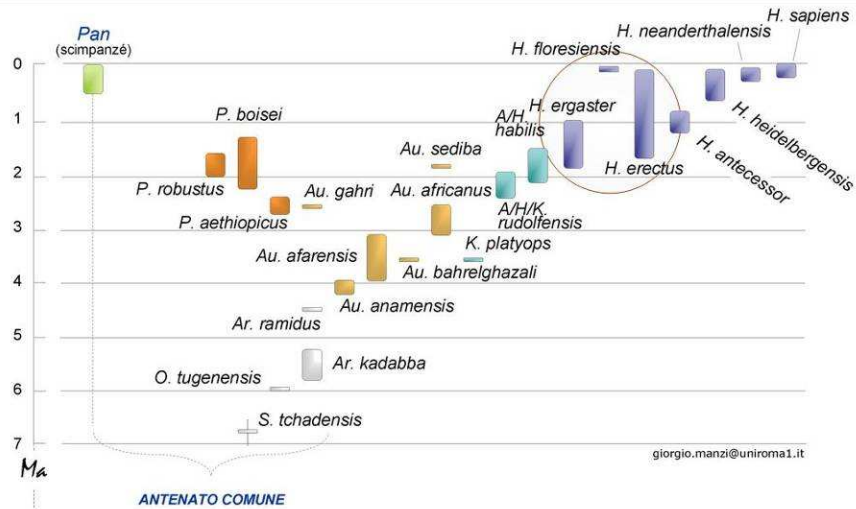


Homo ergaster / erectus



giorgio.manzi@uniroma1.it

Modi tecno-tipologici del Paleolitico

Paleolitico

(a partire da circa 2,5 Ma)

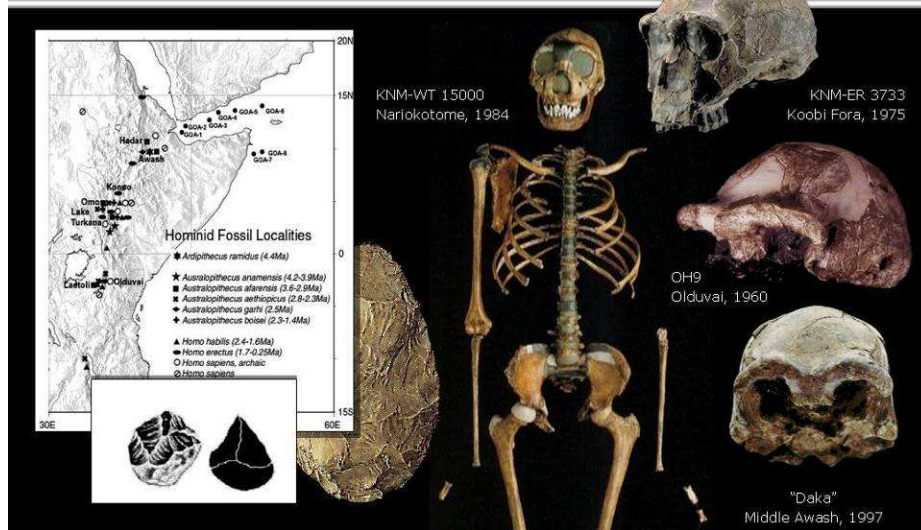
- Paleolitico superiore (Modo 4)
- Paleolitico medio (Modo 3)
- ✓ Paleolitico inferiore (Modo 1 & Modo 2)

(Mesolitico = Modo 5)

1 2 3 4

Homo ergaster (H. erectus africano)

giorgio.manzi@uniroma1.it

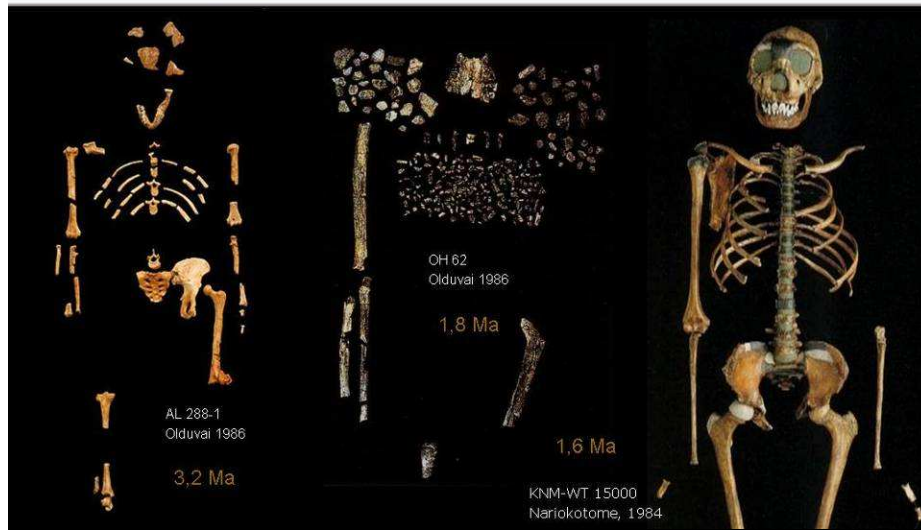


Un nuovo cranio

giorgio.manzi@uniroma1.it

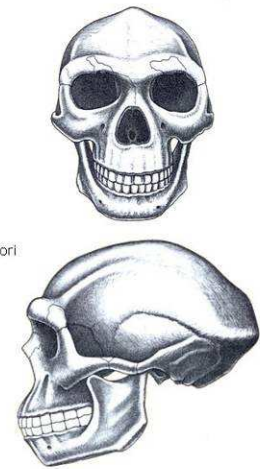


Un nuovo "lanplan"



Homo erectus, una diagnosi "asiatica"

- ✓ Long and low cranial vault, with brain size around 1000 ml
- ✓ Opisthocranium coincident with inion, and sharply angulated occipital profile
- ✓ Maximum breadth across the temporal areas (convergent parietal walls)
- ✓ Massive & almost rectilinear supraorbital torus, without glabellar inflexion
- ✓ Receding frontal profile with weak (or absent) supratatorial sulcus
- ✓ Strong postorbital constriction
- ✓ Sagittal (& coronal) keel with parasagittal depressions
- ✓ Transverse occipital torus, continuous with supramastoid crests and angular tori
- ✓ Straight & low temporal squama
- ✓ Supramastoid / suprameatal shelf
- ✓ Non-ossified styloid process
- ✓ Coronal tympanic plate inclination
- ✓ Deep glenoid fossa & high postglenoid projection
- ✓ Large, prognathic, and relatively flat face
- ✓ Thick vault bones



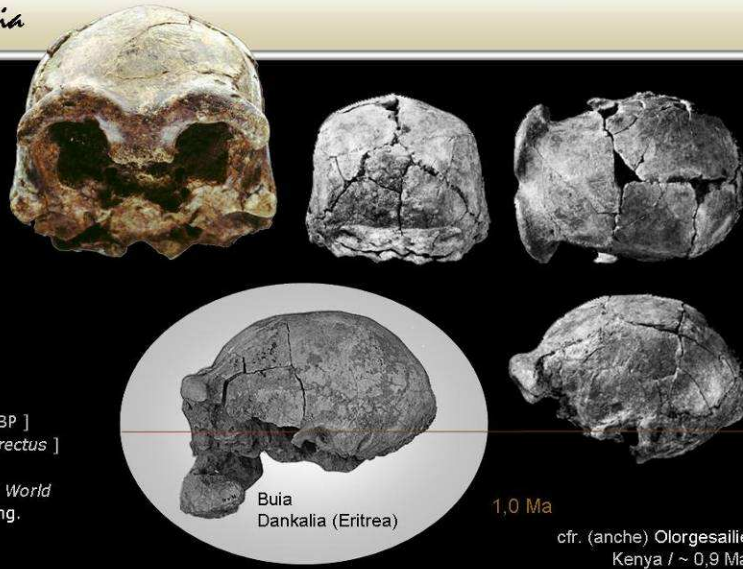
Daka e Buia

Daka
Bouri
Middle Awash
Ethiopia



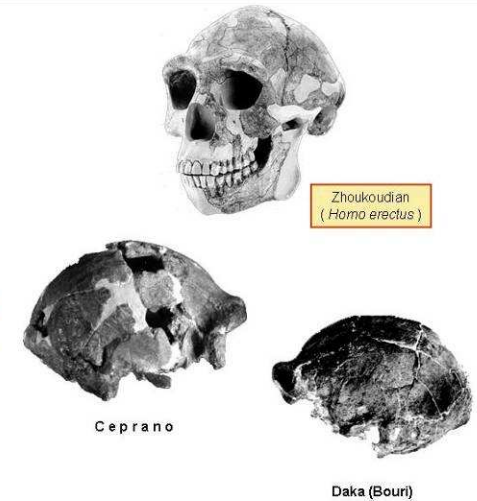
... Indicates
that by 1 Myr [BP]
the taxon [*H. erectus*]
had colonized
much of the Old World
without speciating.

Nature (2002)

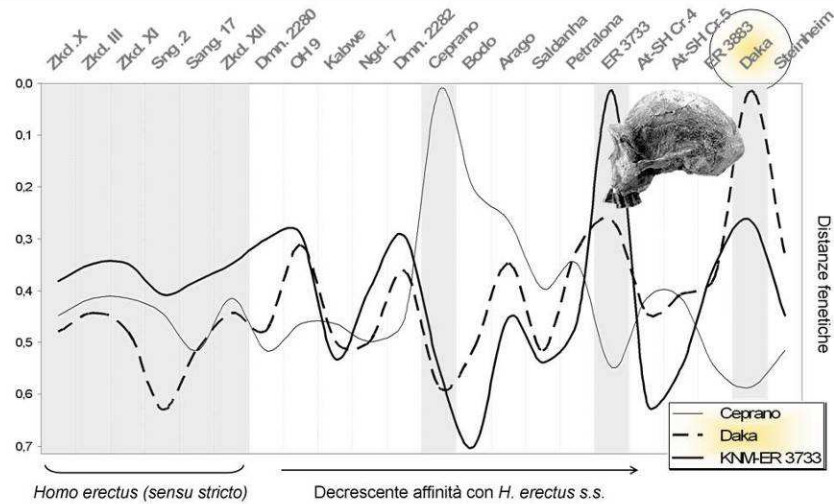


"erectus - likelinesi"

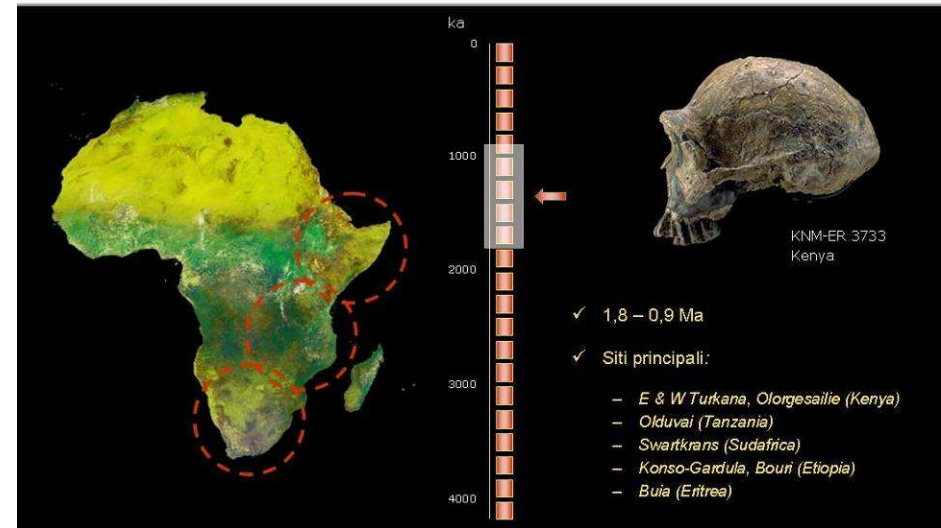
Zkd. X	<i>H. erectus s.s.</i>	.800
Zkd. III	<i>H. erectus s.s.</i>	.767
Zkd. XI	<i>H. erectus s.s.</i>	.767
Sang. 2	<i>H. erectus s.s.</i>	.750
Sang. 17	<i>H. erectus s.s.</i>	.733
Zkd. XII	<i>H. erectus s.s.</i>	.700
D2280	<i>H. cf. ergaster</i>	.679
OH9	<i>H. erectus s.l.</i>	.621
Kabwe	archaic Homo	.621
Ngd. 7	<i>H. erectus s.l.</i>	.621
D2282	<i>H. cf. ergaster</i>	.600
Ceprano	archaic Homo	.567
Bodo	archaic Homo	.563
Arago	archaic Homo	.563
Saldanha	archaic Homo	.524
Petralona	archaic Homo	.519
ER 3733	<i>H. Ergaster</i>	.500
AT-SH C.4	archaic Homo	.500
AT-SH C.5	archaic Homo	.500
ER 3883	<i>H. Ergaster</i>	.433
Daka	<i>H. ergaster (?)</i>	.393
Steinheim	archaic Homo	.333



Distanze fenetiche



Homo ergaster



Daka come Homo ergaster

